

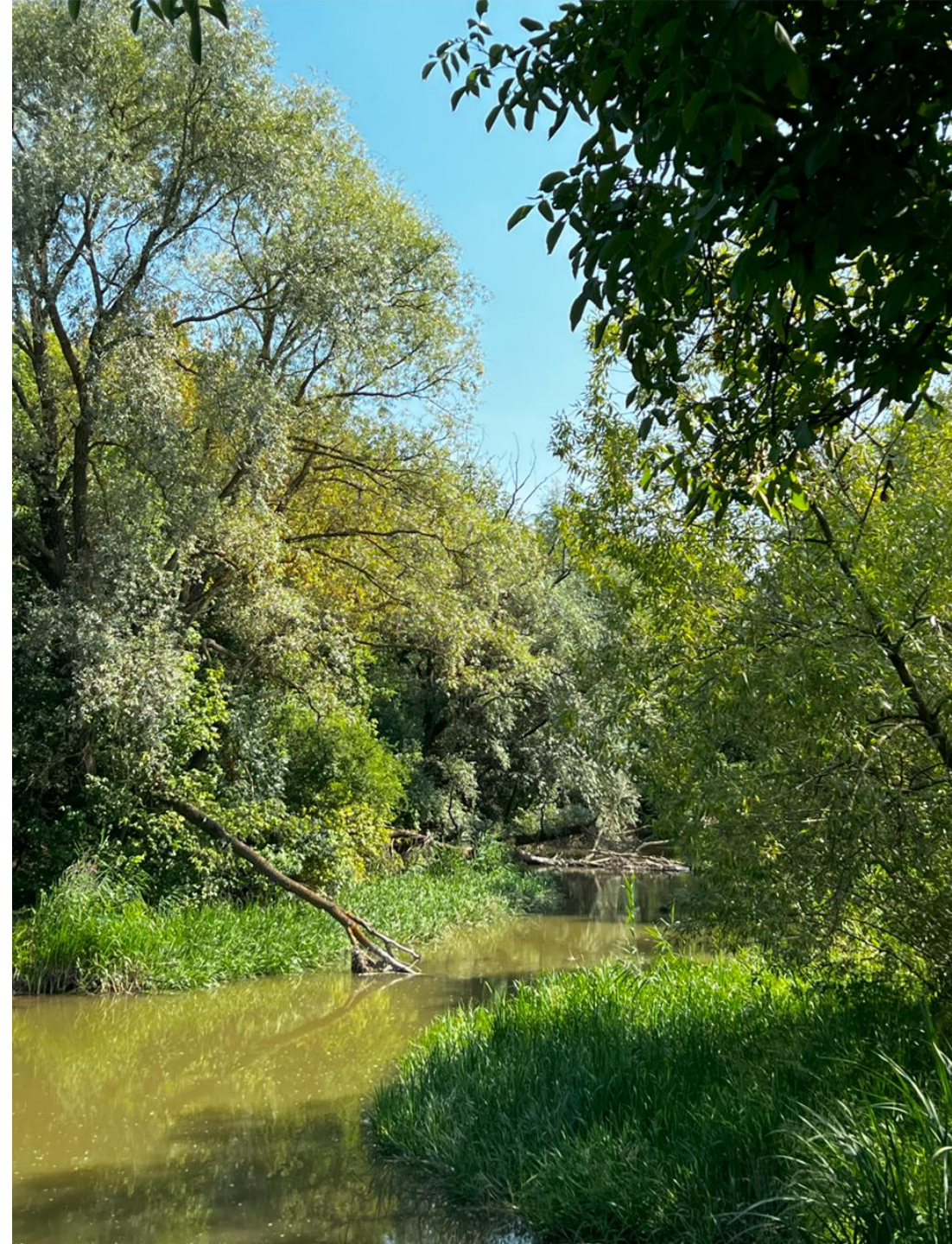
Mureş Parks

Târgu Mureş

PUBLIC CONSULTATION

September 2025

-Document translated from Romanian-

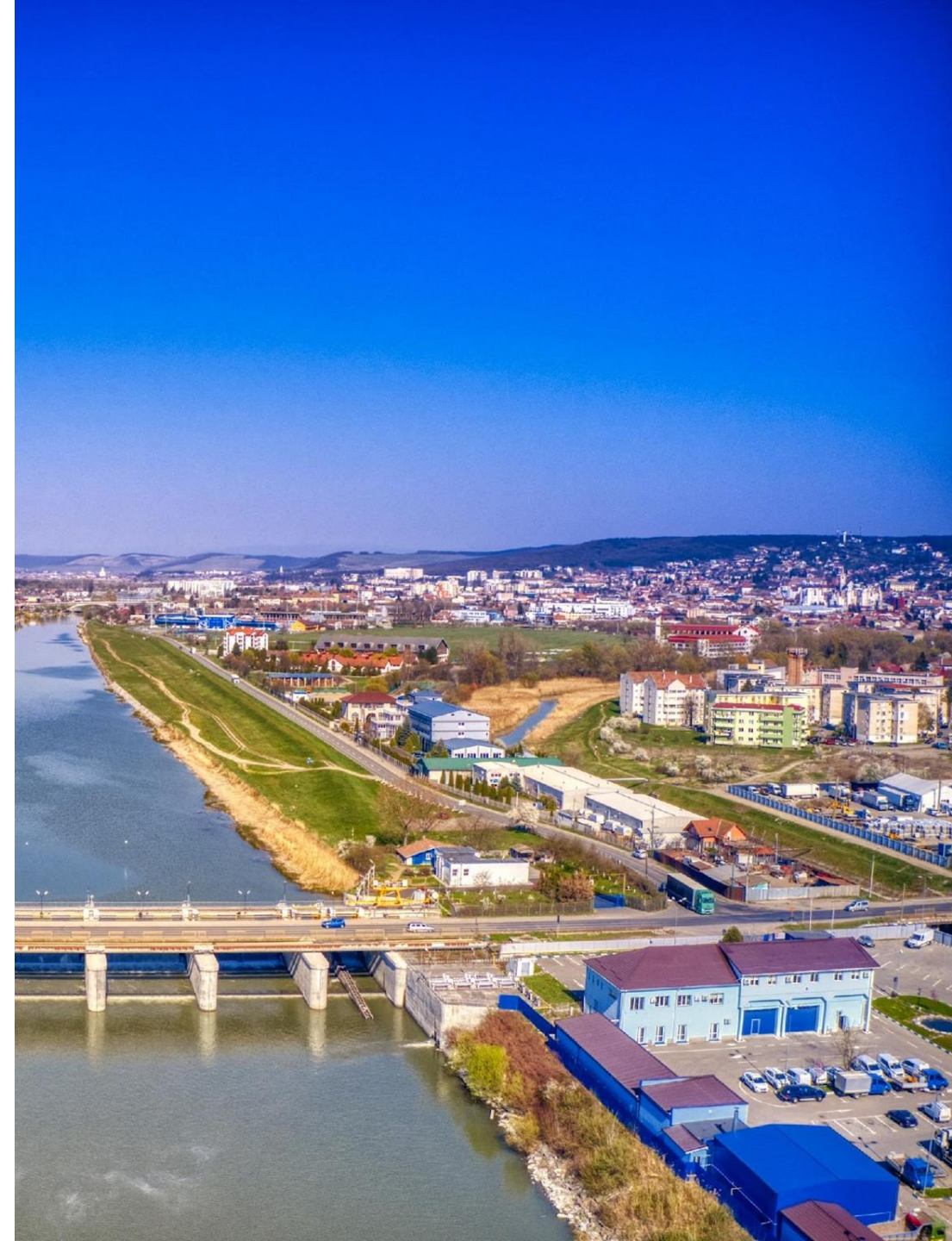


Subject of the consultation:

Târgu-Mureş City Hall in partnership with the Romanian Order of Architects is organizing an international design competition, a public procurement procedure for architectural and design services, in order to obtain the best proposals for the transformation and design of these public spaces in accordance with the history and context of the city, as well as with the wishes and needs of citizens.

Stages of the consultation:

In order to substantiate the design brief of the competition, an extensive public consultation process was launched with citizens, through an online questionnaire, as well as through a series of public debates involving the Romanian Order of Architects - Mureş Branch, NGOs active in the Municipality of Târgu-Mureş, neighbours and stakeholders and, of course, the general public.



Objectives:

Reestablishing ecological continuity along the historical bed of the Mureș River, creating and reactivating promenade spaces and connecting with the nature of the river in close connection with the historical core of the city.

Creating a new major park system that would restore the identity of the Mureș city to the municipality of Târgu Mureș.

Amplifying the landscape, ecological and urban climate resilience values, while providing an improved infrastructure for sustainable urban pedestrian and bicycle mobility and a wide range of spaces for recreation, socialization, relaxation, and leisure, outdoor exercise, and play.



**Intervention
area:**

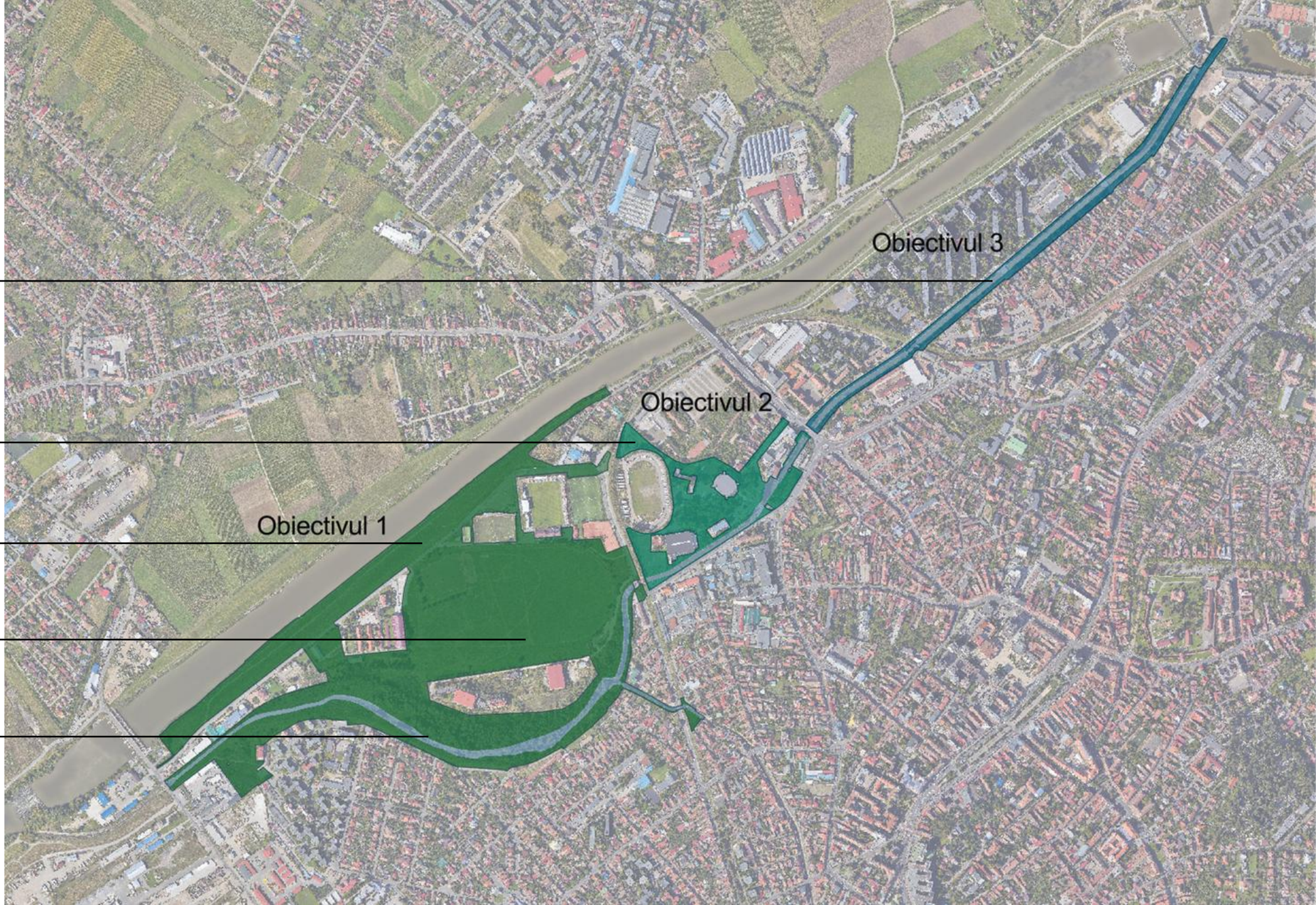
**Turbine Canal
Carpați Alley**

Municipal Park

**Mureș
Riverbank**

Hippodrome

Dead Arm



Obiectivul 3

Obiectivul 2

Obiectivul 1

Existing situation:

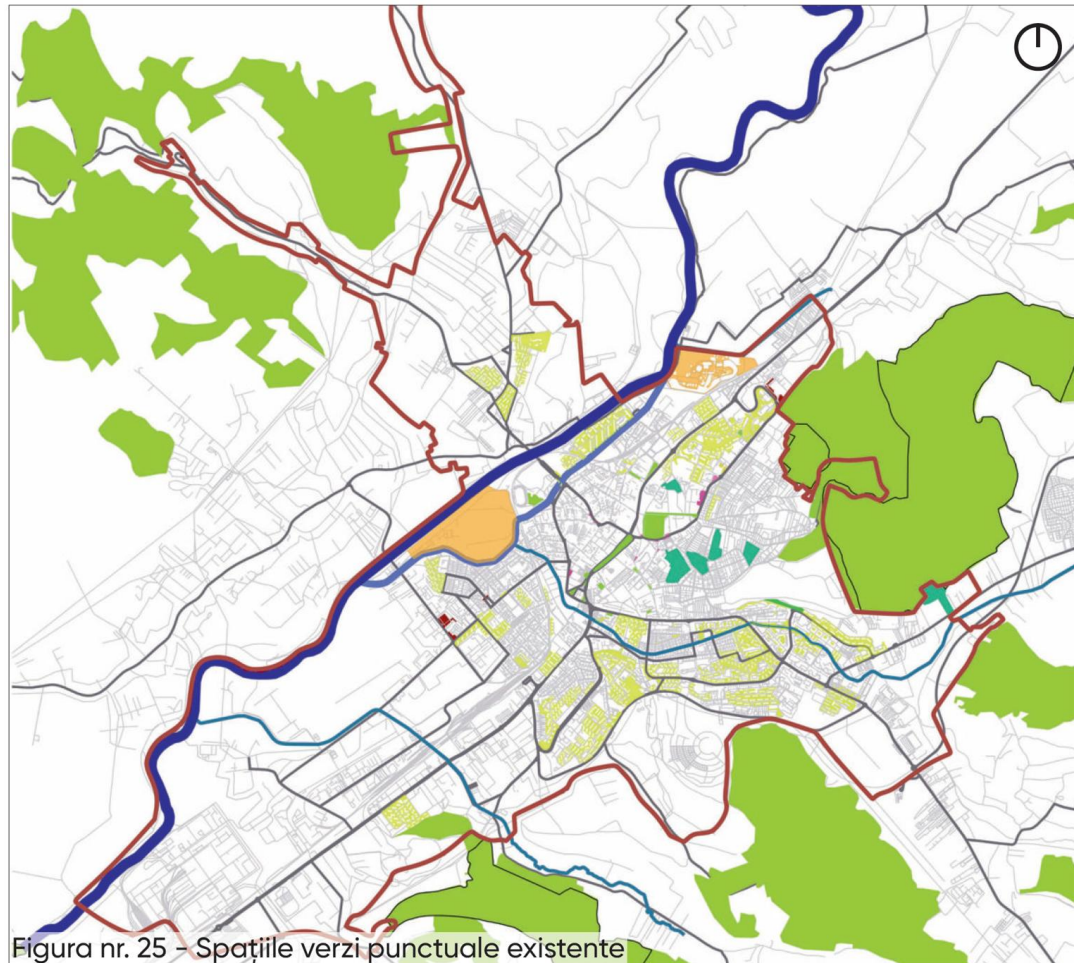
The area that is the subject of the competition is currently presented as isolated fragments of green spaces resulting from various construction and densification operations on the Mureş River floodplain. These are often uncorrelated and disconnected from the urban, natural and historical context.



Existing situation: Substantiation study

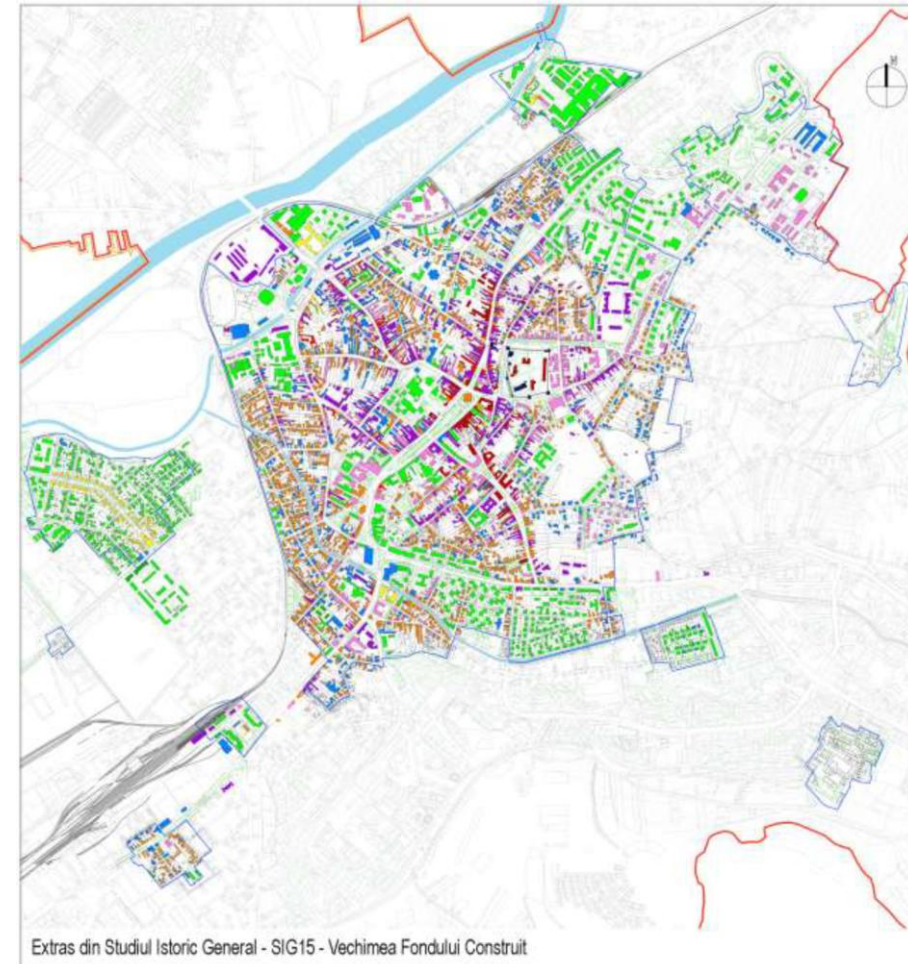
Landscape study excerpt (Absis 3d Studio):

Existing green space system



Excerpt of the General historical study:

Age of the built fund



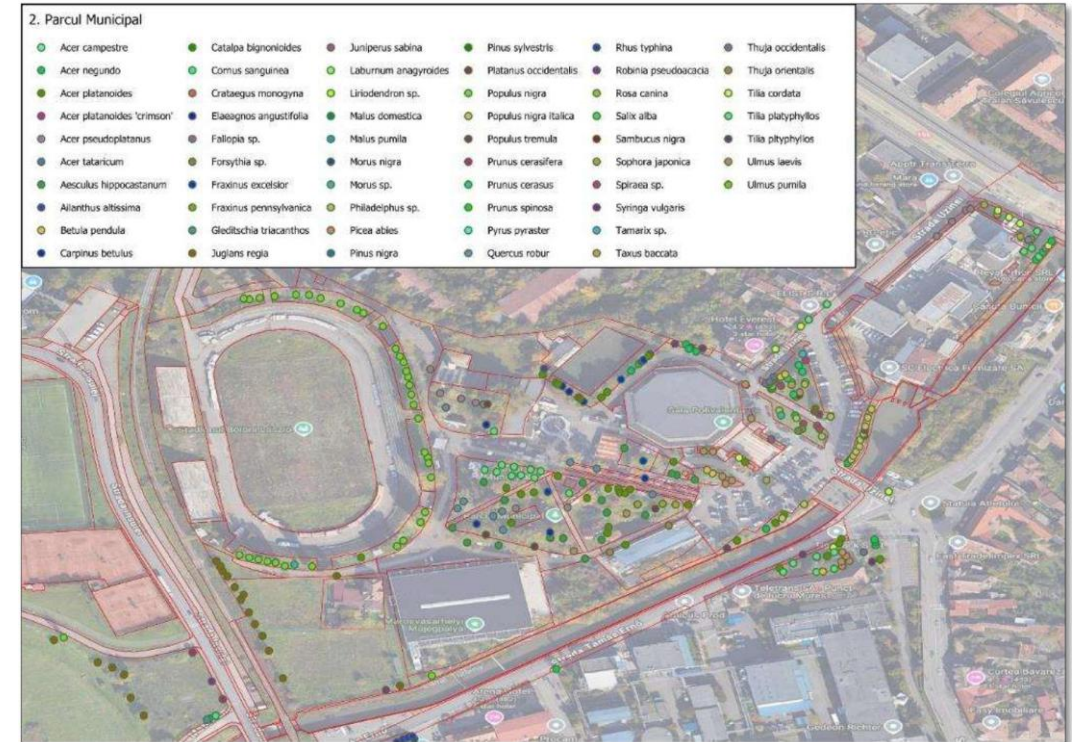
Existing situation: Substantiation studies

Excerpt of the Biodiversity study (Wildlife management):

Avifaunistic observations collected during the study



Dendrological inventory for one of the objectives



Investment objective 1:

Hippodrome area with the The relict meander of Mureş, and the adjacent Mureş river bank



Investment objective 1:

Hippodrome area with the relict meander of Mureş,
and the adjacent Mureş riverbank

Existing situation:

- *the historical meandering area of the Mureş river*
- *between the old and new riverbed*
- *high biodiversity on the relict meander of Mureş*
- *a diversity of neighbouring urban tissues*



Investment objective 1:

Hippodrome area with relict meander of Mureş and the adjacent Mureş riverbank

Brief directions:

- protection of the relict meander area, an area of maximum ecological interest
- creation of pedestrian and ecological connections between the old and new Mureş
- identity of the Hippodrom area as a park in Mureş
- connection to both Mureş and the city's street network
- Pocloş stream as a direct link to the historic center
- revaluing residual spaces between neighbouring functions to maximize ecological objectives and bicycle-pedestrian mobility



Investment objective 2:

Municipal Park Area

Existing situation:

- *former "Elba" island, later "Elisabeta Park" - integrated a natural space of the Mureş River into the urban fabric*
- *later removed from the river and loses contact with the water*
- *preserved island appearance: infrastructural obstacles*
- *oversaturated with constructions - residual spaces*



Investment objective 2:

Municipal Park Area

Brief directions:

- integration into the municipal green-blue system, being essential for the continuity of the park ensemble
- restoring the relationship with both the Mureș River and the historic center
- restoring the coherence and spatial identity of the current park, through optimizations in favour of pedestrians and vegetation
- preservation and valorisation of valuable mature vegetation

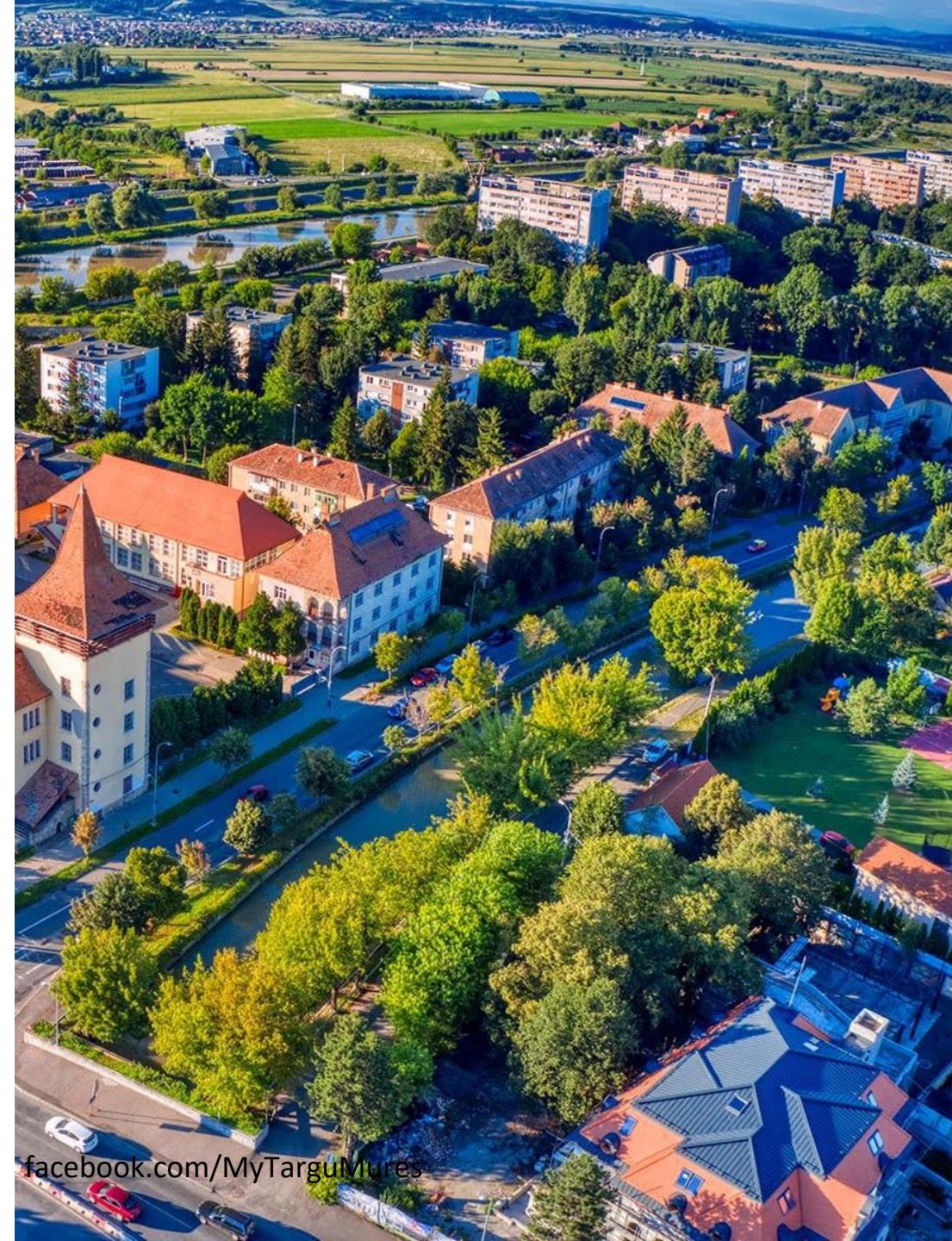


Investment objective 3:

Turbine Canal – Carpați Alley area

Existing situation:

- the Morii arm, regulated and controlled over time
- the area delimited by Carpați Alley and Margaretelor Street, with varied distributions, some sections exclusively pedestrian
- there are several bridges on this section and the urban railway network also crosses the area



Investment objective 3:

Turbine Canal – Carpați Alley area

Brief directions:

- ensuring a green-blue corridor between the relict meander of the Mureș and the Turbine Canal
- preservation and valorisation of valuable mature vegetation
- longitudinal continuity along the canal
- bringing the historic center closer to the river by creating transverse connections



Thank you for your attention!

We look forward to your opinions and suggestions regarding the future park.

